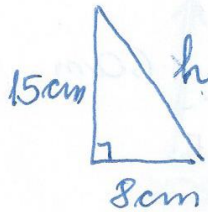
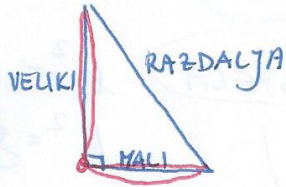
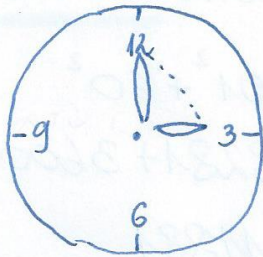


3. URA PI V BESEDILNIH NALOGAH - REŠITVE

U št. 183/9



$$h^2 = 15^2 + 8^2$$

$$h^2 = 225 + 64$$

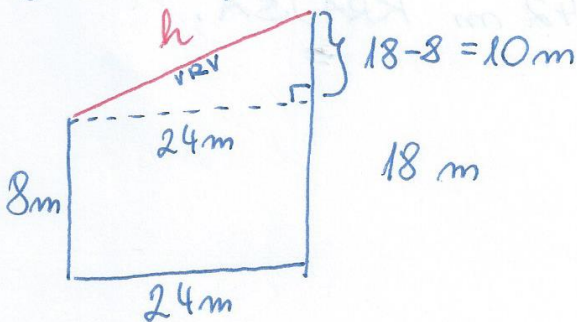
$$h^2 = 289$$

$$h = \sqrt{289}$$

$$h = 17 \text{ cm}$$

RAZDALJA MED VRHOVOMA JE 17 cm.

U št. 183/10



$$h^2 = 24^2 + 10^2$$

$$h^2 = 576 + 100$$

$$h^2 = 676$$

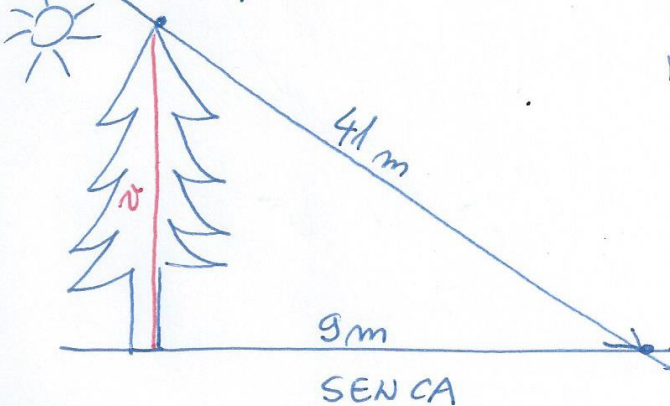
$$h = \sqrt{676}$$

$$h = 26 \text{ m}$$

VRV JE HIPOTENUZA.

VRV MORA BITI DOLGA 26 m.

U št. 183/11



VIŠINA DREVESA JE KATETA.

$$v^2 = 41^2 - 9^2$$

$$v^2 = 1681 - 81$$

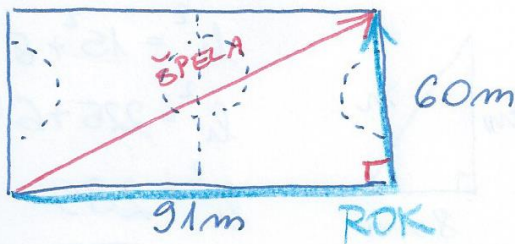
$$v^2 = 1600$$

$$v = \sqrt{1600}$$

$$v = 40 \text{ m}$$

DREVO JE VISOKO 40 m.

U št. 183/13



ROK = $91\text{ m} + 60\text{ m} = 151\text{ m}$

ŠPELA

$$h^2 = 91^2 + 60^2$$
$$h^2 = 8281 + 3600$$
$$h^2 = 11881$$
$$h = \sqrt{11881}$$

h = 109 m

$$\begin{array}{r} 151 \\ - 109 \\ \hline 42 \end{array}$$

ŠPELINA POT JE 42 m KRAJŠA.