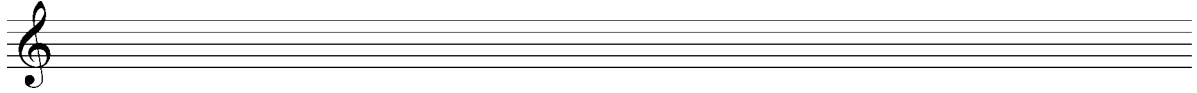


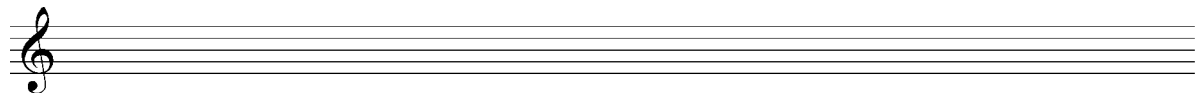
5. Delovni list

1. Utrjevanje modusov in občutka modalnosti – zapišite tone po nareku in ugotovite modus(e)

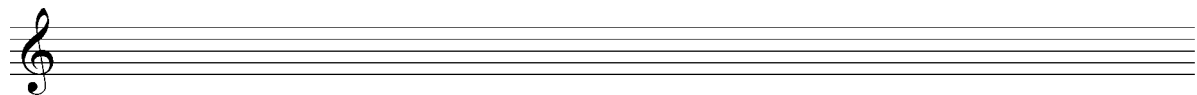
a)



b)



c)



2. Izvajajte dvoglasje na naslednja načina:

a) s počasnim petjem enega glasu in sočasno predstavo (*notranjim slišanjem*) drugega

b) z *notranjim poslušanjem* dvoglasja kot celote

O. di Lasso (1532-1594): Matejev pasijon (4 odlomki)

A

Soprano

Quid vul - tis mi - hi da - re,

Altus

Quid vul - tis mi - hi da - - - -

 Musical score for Soprano and Altus, measures 1-4. The Soprano part has a treble clef and a key signature of one flat. The Altus part has a bass clef and a key signature of one flat. The lyrics are: Soprano: Quid vul - tis mi - hi da - re,; Altus: Quid vul - tis mi - hi da - - - -.

5

et e - go e - um vo - - - bis tra - - dam,

- re, et e - go e - um _____ vo - bis tra - dam, et

 Musical score for Soprano and Altus, measures 5-8. The Soprano part has a treble clef and a key signature of one flat. The Altus part has a bass clef and a key signature of one flat. The lyrics are: Soprano: et e - go e - um vo - - - bis tra - - dam,; Altus: - re, et e - go e - um _____ vo - bis tra - dam, et.

10

et e - go e - um vo - bis tra - - - dam?

e - go e - - - - um _____ vo - - - bis tra - dam?

 Musical score for Soprano and Altus, measures 10-13. The Soprano part has a treble clef and a key signature of one flat. The Altus part has a bass clef and a key signature of one flat. The lyrics are: Soprano: et e - go e - um vo - bis tra - - - dam?; Altus: e - go e - - - - um _____ vo - - - bis tra - dam?.

B

Soprano

Et si o - mnes scan-da-li - za - ti fu - e - rint in _____

Altus

Et si o - mnes scan-da-li - za - ti fu - e - rint _____

7

te, e - go num - quam scan - da - li - za - bor.

in te, e - go num - quam scan - da - li - za - bor.

C

Soprano

Et - i - am si o - por - tu - e -

Altus

Et - i - am si o - por - tu - e - rit _____

5

rit me mo - ri te - - - - cum, non

me mo - ri - - - - te - - - - cum,

9

te ne - ga - bo, non te ne - ga - - - - bo.

non te ne - ga - bo, non te ne - ga - - - - bo.

D

Soprano

Quem-cum - que o - scu - la - tus _____ fu -

Altus

Quem-cum - que o - scu - la - tus fu - - - - -

6

e - ro, i - pse est, te - ne - te

e - ro, i - pse est, i - pse est, te -

11

e - um, te - ne - te e - um.

ne - te e - um, te - ne - te e - um.

3. Zapišite odlomek:

a) zgolj ritmično

b) tudi tonsko

4. Zapišite dvoglasje:

5. Zapis akordov:

13

6

11

16

21

26

31

36

41

45