

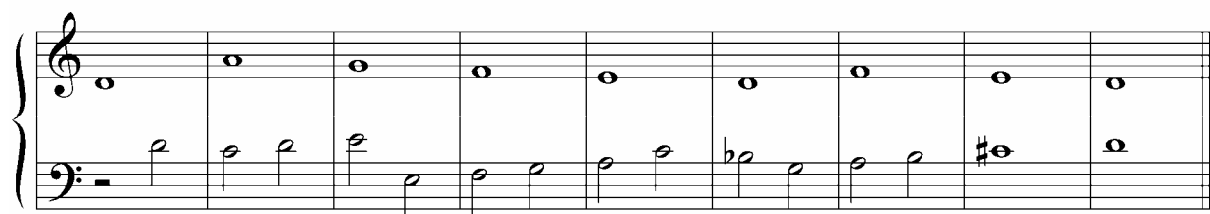
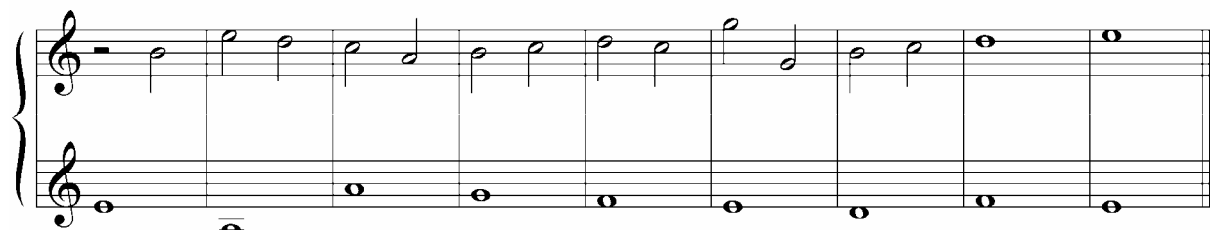
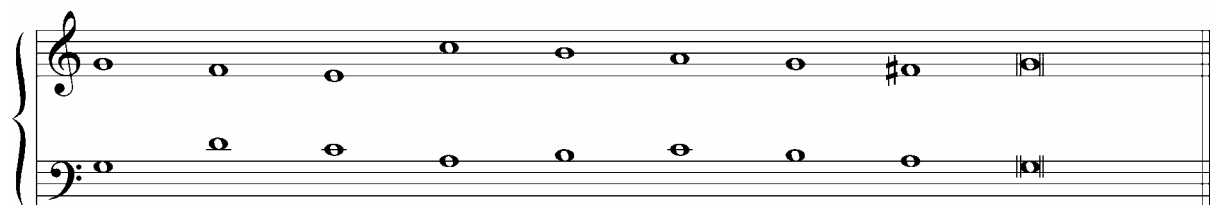
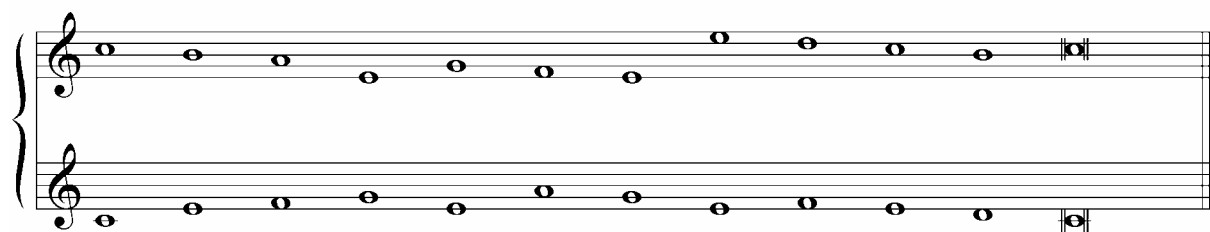
3. Delovni list

1. Utrjevanje modusov in občutka modalnosti - petje vaj v različnih modusih (z dodajanjem ustreznih predznakov) na istem tonu



2. Izvajajte dvoglasja na naslednja načina:

- a) s počasnim petjem enega glasu in sočasno predstavo (*notranjim slišanjem*) drugega
b) z *notranjim poslušanjem* dvoglasja kot celote



3. Zapišite odlomek:

a) zgolj ritmično

A musical staff for piano, consisting of two staves (treble and bass clefs) joined by a brace on the left. The key signature is three flats (B-flat, E-flat, A-flat) and the time signature is common time (C). The first measure contains a whole note in the treble clef and a whole note in the bass clef. The remaining seven measures are empty, with vertical bar lines indicating the measure boundaries. The staff ends with a double bar line.

b) tudi tonsko

A musical staff for piano, consisting of two staves (treble and bass clefs) joined by a brace on the left. The key signature is three flats (B-flat, E-flat, A-flat) and the time signature is common time (C). The first measure contains a whole note in the treble clef and a whole note in the bass clef. The remaining seven measures are empty, with vertical bar lines indicating the measure boundaries. The staff ends with a double bar line.

4. Zapišite odlomek:

a) zgolj ritmično

A musical staff for piano, consisting of two staves (treble and bass clefs) joined by a brace on the left. The key signature is C major and the time signature is common time (C). The first measure contains a whole note in the treble clef and a whole note in the bass clef. The remaining two measures are empty, with vertical bar lines indicating the measure boundaries. The staff ends with a double bar line.

b) tudi tonsko

A musical staff for piano, consisting of two staves (treble and bass clefs) joined by a brace on the left. The key signature is C major and the time signature is common time (C). The first measure contains a whole note in the treble clef and a whole note in the bass clef. The remaining two measures are empty, with vertical bar lines indicating the measure boundaries. The staff ends with a double bar line.

5. Zapišite oklepajoče dvoglasje:

A musical staff for piano, consisting of two staves (treble and bass clefs) joined by a brace on the left. The key signature is C major and the time signature is common time (C). Both staves are empty, with vertical bar lines indicating the measure boundaries. The staff ends with a double bar line.

7

7
Ju - sti tu - le - runt spo - li - a im - pi - o - rum,
Ju - sti tu - le - runt spo - li - a im - pi -

7

7
im - pi - o - rum, et can - ta - ve - runt, Do
o - rum, im - pi - o - rum, et can - ta - ve -

12

12
- mi - ne, no - men san - ctum tu - um,
- runt Do - mi - ne, no - men san - ctum tu - um, et

18

18
et vi - ctri - cem ma - num tu - am lau - da - ve -
vi - ctri - cem ma - num tu - am lau -

23

23
- runt pa - ri - ter, Do - mi - ne De - us
da - ve - runt pa - ri - ter, Do - mi - ne De - us

29

29
- us, De - us no - ster.
De - us no - ster.

8

San - cti me - i, San -

San - cti... me - i, ... san -

6

cti... me - i, qui... in i - sto...

cti me - i, qui... in i - sto...

11

... sae - cu - lo cer - ta - men ha -

... sae - cu - lo cer - ta - men ha -

16

- bu - i - stis, mer - ce - dem la - bo - rum ve -

- bu - i - stis, mer - ce - dem la - bo - rum

21

stro - rum e - go red - dam... vo -

ve - stro - rum e - go red - dam vo -

26

- bis, e - go red - dam vo -

- bis, e - go red - dam vo -

31

- bis, e - go red - dam vo -

- bis. e - go, e - go red - dam vo - bis.

Ser - ve bo - ne
10 et fi - de -
Ser - ve bo - ne et fi - de -

6
lis, qui - a in pau - ca fu - i - sti fi - de -
lis, qui - a in pau - ca fu - i - sti fi - de -

11
lis, su -
lis, su - pra mul -

16
- pra mul - ta te con - sti - tu - am, con -
- ta te con - sti - tu - am, con - sti - tu - am:

21
sti - tu - am: in - tra, in - tra, in gau - di - um Do -
in - tra, in - tra in gau - di - um Do -

26
Do - mi - ni, in gau - di - um, in gau - di - um . . . Do - mi -
- mi - ni, in gau - di - um, in gau - di - um Do -

31
ni De - i tu - i.
- mi - ni De - i tu - i.