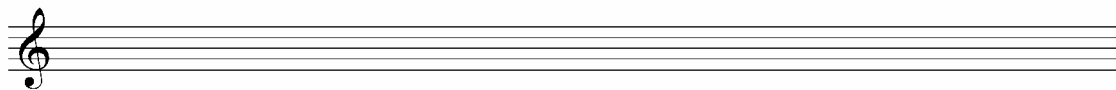
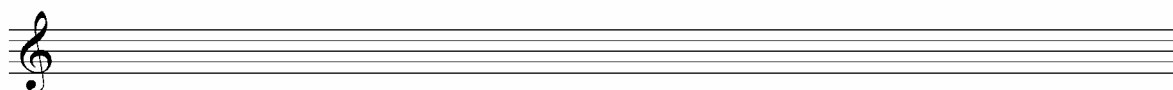


18. Delovni list

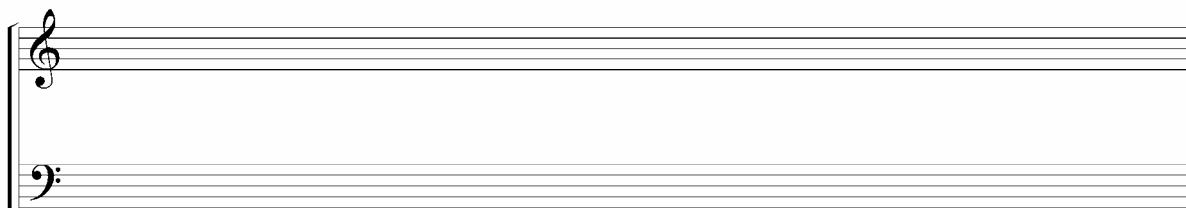
1. Zapis lestvičnih stopenj s harmonizacijo:



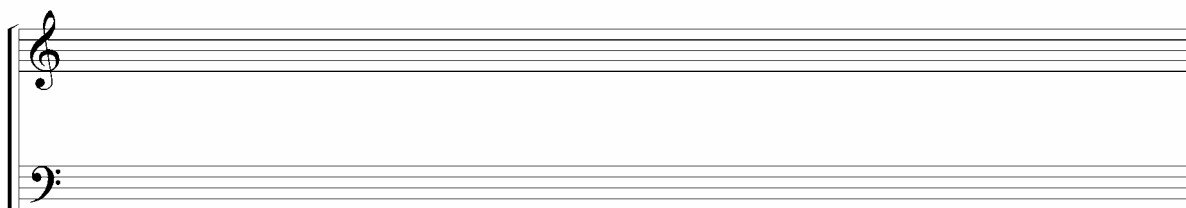
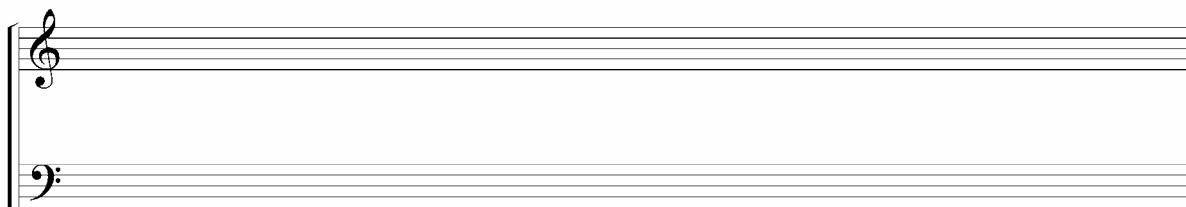
2. Zapis četverozvokov:



3. Zapis oklepajočega dvoglasja. Obkrožite vse osnovne tone akordov, nad linijo soprana napišite funkcije tonov v akordu, pod linijo basa prav tako. Podpišite še funkcijske označbe.:



4. **J. Brahms:** *Sonata op. 120, št. 1, 3. st.*
~ zapišite odlomek in podpišite funkcijske označbe:



5. J. Brahms: Sonata op. 120, št. 1, 3. st (vaja št. 4)

6. Zapišite funkcijski potek v naslednjem odlomku (pomagajte si z zapisom basove linije):

7.

Musical score for Solfeggio I, measures 12-65. The score is written for two staves (treble and bass clef) and includes various musical notations such as notes, rests, and triplets. The key signature is one flat (B-flat major or D minor). The time signature is 4/4. The score is divided into systems, with measures 12-13, 13-14, 14-15, 15-16, 16-17, 17-18, 18-19, 19-20, 20-21, 21-22, 22-23, 23-24, 24-25, 25-26, 26-27, 27-28, 28-29, 29-30, 30-31, 31-32, 32-33, 33-34, 34-35, 35-36, 36-37, 37-38, 38-39, 39-40, 40-41, 41-42, 42-43, 43-44, 44-45, 45-46, 46-47, 47-48, 48-49, 49-50, 50-51, 51-52, 52-53, 53-54, 54-55, 55-56, 56-57, 57-58, 58-59, 59-60, 60-61, 61-62, 62-63, 63-64, 64-65. The score includes various musical notations such as notes, rests, and triplets. The key signature is one flat (B-flat major or D minor). The time signature is 4/4. The score is divided into systems, with measures 12-13, 13-14, 14-15, 15-16, 16-17, 17-18, 18-19, 19-20, 20-21, 21-22, 22-23, 23-24, 24-25, 25-26, 26-27, 27-28, 28-29, 29-30, 30-31, 31-32, 32-33, 33-34, 34-35, 35-36, 36-37, 37-38, 38-39, 39-40, 40-41, 41-42, 42-43, 43-44, 44-45, 45-46, 46-47, 47-48, 48-49, 49-50, 50-51, 51-52, 52-53, 53-54, 54-55, 55-56, 56-57, 57-58, 58-59, 59-60, 60-61, 61-62, 62-63, 63-64, 64-65. The score includes various musical notations such as notes, rests, and triplets.

Z. Kodaly

4.

6

10

15

20